
Welcome to Back to School Night!

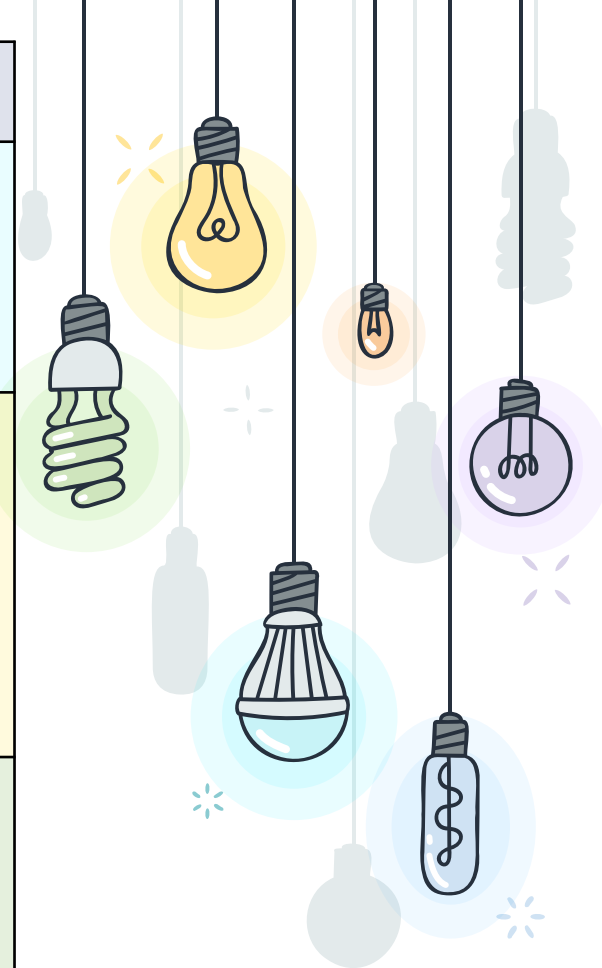


Grading

New Policies 2021-2022

Level 1, 2 and 3
assignments have replaced
student → student & the
previous
summative/formative
breakdown.

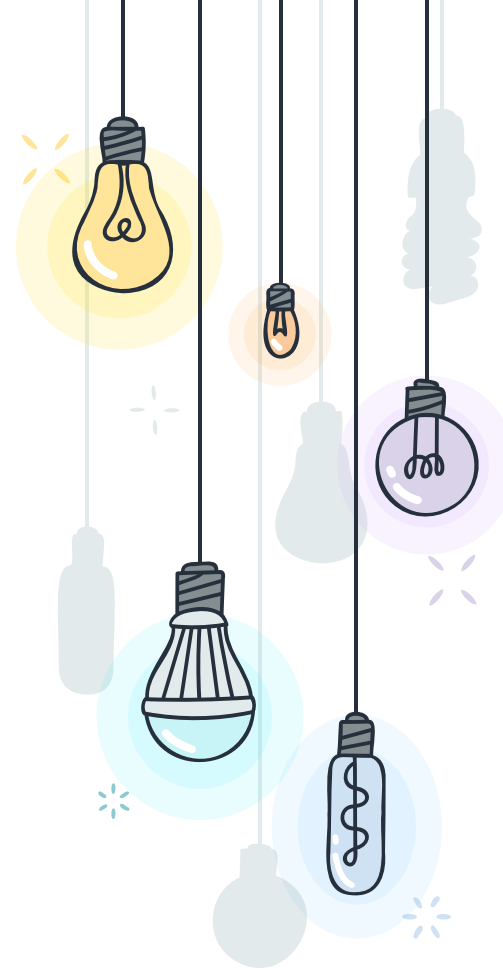
<u>Category & Weight</u>	<u>Description</u> (Explanation of Grading Category)	<u>Number of Assignments</u>
<p><u>Gradebook Category:</u> Level 1</p> <p><u>Weight:</u> 20% of the Marking Period Grade</p>	<p>Teachers will collect formative assignments and students will be awarded grades for accuracy and/or active engagement in these assignments.</p>	<p><u>By interim:</u> 4 (max. 10)</p> <p><u>By end of marking period:</u> 8 (max. 20)</p>
<p><u>Gradebook Category:</u> Level 2</p> <p><u>Weight:</u> 30% of the Marking Period Grade</p>	<p>Assignments in this category will be in-depth assignments that are designed to determine the student's level of understanding with regard to the topics covered during in class instruction.</p> <p>These are tasks in which students demonstrate their ability to transfer content knowledge to various learning activities</p>	<p><u>By interim:</u> 3 (max 6)</p> <p><u>By end of marking period:</u> 6 (max. 12)</p>
<p><u>Gradebook Category:</u> Level 3</p> <p><u>Weight:</u> 50% of the Marking Period Grade</p>	<p>Assignments given in this category will show how well students have mastered the content taught within the marking period.</p> <p>These assessments will be common throughout each course and will be standards-based.</p>	<p><u>By interim:</u> 2</p> <p><u>By end of marking period:</u> 4 (max. 5)</p>



LBHS Late Policy

LBHS LATE POLICY

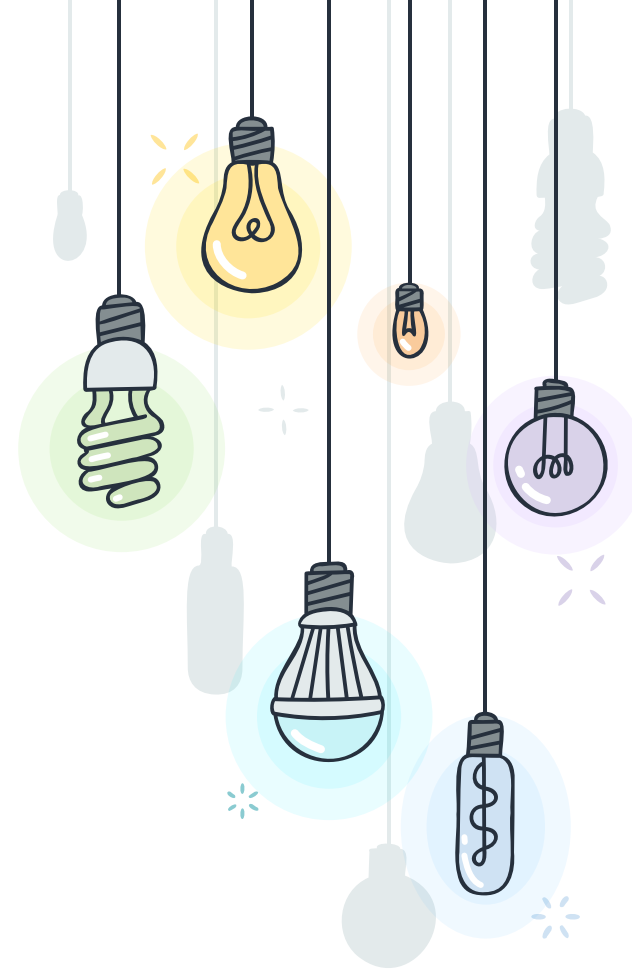
- + Students will a maximum score of an 80% for any assignment turned in **after** the due date and up until the cutoff date.
- + Students will earn a maximum score of a 65% for any assignment turned in **after** the cutoff date.
- + After the stated cutoff dates, students will have the opportunity to turn in the assignment for a max grade of a 65 (for the remainder for the marking period).



✧ US HISTORY II

Almost all work will be started in class. If students are unable to finish them, they typically have to for homework.

Common grades - classwork, SCRs, quizzes, tests and projects.



✧ US HISTORY II HONORS

Homework isn't assigned every day, but when it is it is very important students complete it.

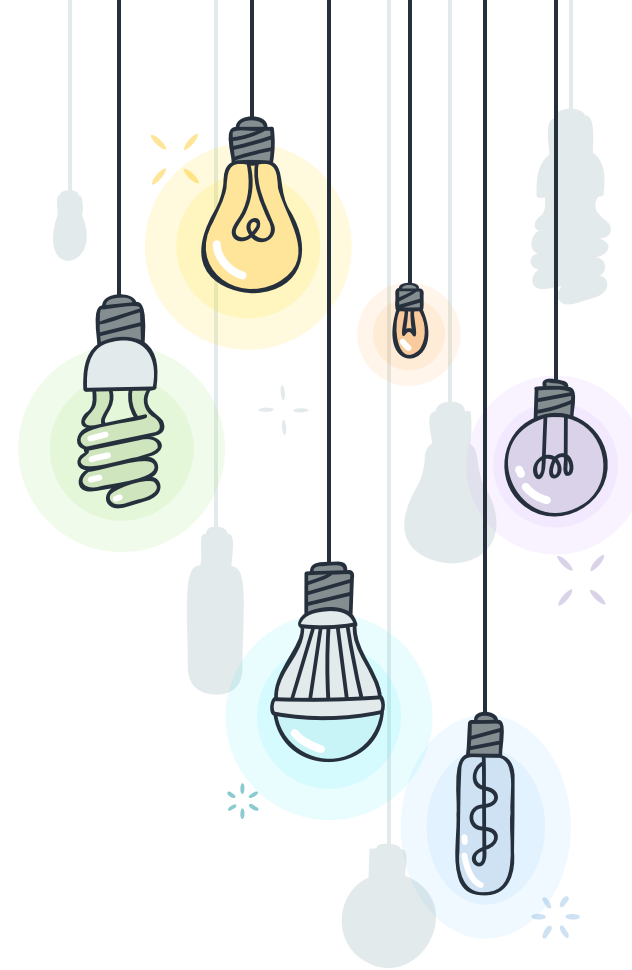
Common grades - classwork, SCRs, quizzes, tests, presentations, debates, and projects.



✧ AFRICAN-AMERICAN STUDIES

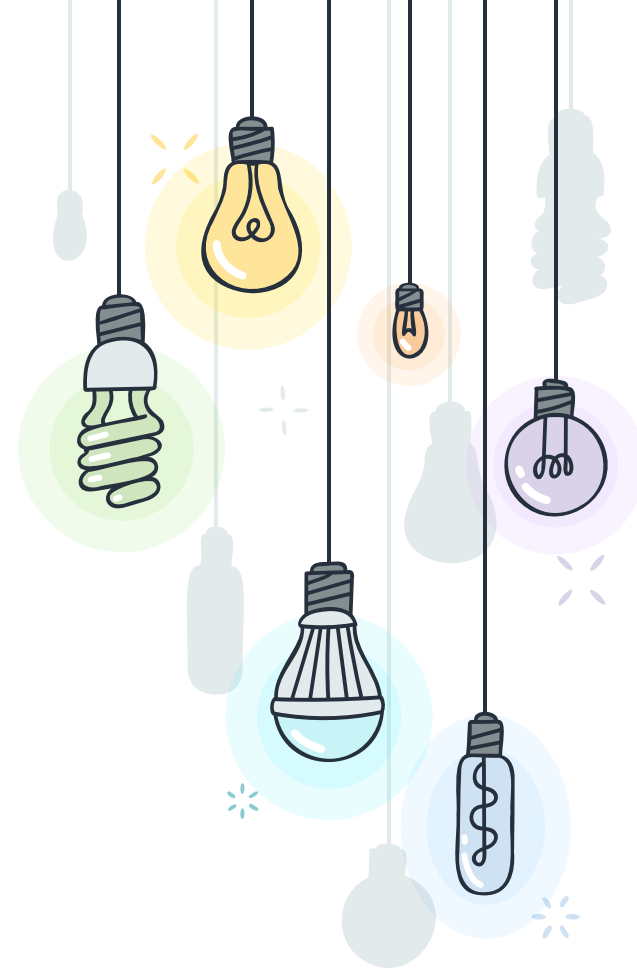
Almost all work will be started in class. If students are unable to finish them, they typically have to do homework.

Common grades - classwork, notebook checks, presentations and projects.



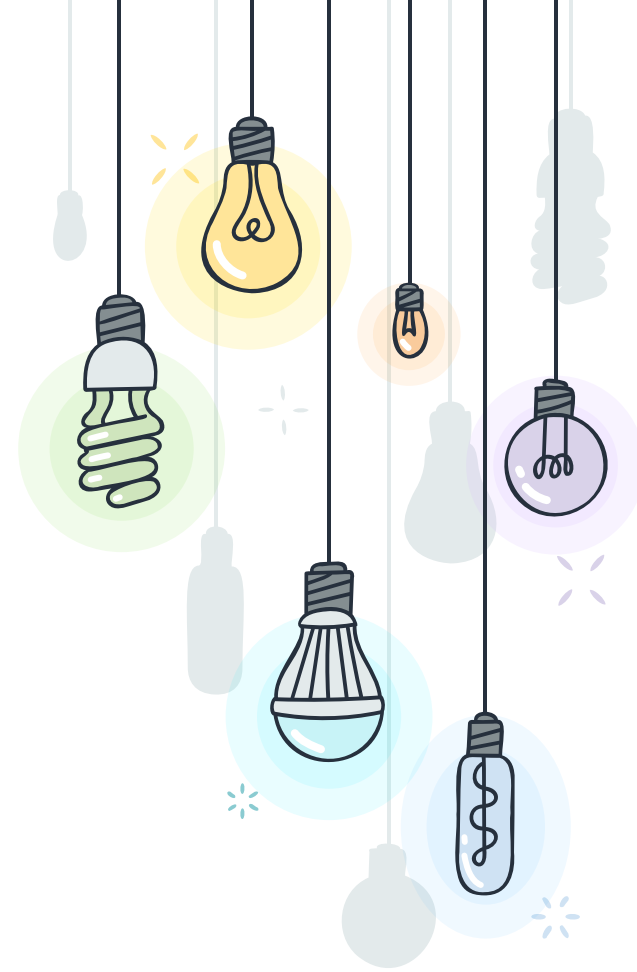
* STUDENT PRIORITIES

- attending class and being on time
- participating in discussions and activities
- communicating when help is needed
- positive attitude



✧ SYLLABUS ON CLASSROOM

- All students/families have access to the course syllabus on the Classroom page
- All families are encouraged to join the Remind page
- All information needed for class will be communicated via these two platforms



Best method of contact:

ckeating@longbranch.k12.nj.us

Phone works too, but you have to leave a voicemail and then I will return your call:

732-229-7300 x.55255





Long Branch Public Schools

"Together We Can, Juntos Nós Podemos, Juntos Podemos"

2021-2022 COVID Procedure

- The State of New Jersey remains in as high risk of Covid transmission. This means that quarantining practices for travel, illness, and in school are still happening.
- Health and Safety procedures continue to be in place for all schools.

Please communicate continuously with your child's school and the School Nurse for each type of possible quarantine (below).

- **Travel quarantine** - currently both domestic and international travel are affected. There may be differences between being vaccinated and not vaccinated but some type of quarantine will be recommended.
- **Symptoms** - if your child is sick or experiencing symptoms, please keep him/her home until symptom free. If your child becomes sick during the school day you will need to pick him/her up from school.
- **Household positive cases** - if anyone in your household tests positive for Covid, **all children in the household** are to remain quarantined at home.
- **Student positive cases** - notify the school immediately and quarantine the student for the recommended number of days.
- **Close contact** - when students are considered a close contact to a positive individual while at school, the student may need to quarantine.

Number of days of quarantines

- May be 10, 14, or up to 24 days dependent upon the type of quarantine (above).



Long Branch Public Schools

"Together We Can, Juntos Nós Podemos, Juntos Podemos"

Procedimiento COVID 2021-2022

- El estado de Nueva Jersey sigue teniendo un alto riesgo de transmisión de Covid. Esto significa que las prácticas de cuarentena para viajes, enfermedades y en la escuela todavía están vigentes.
- Los procedimientos de salud y seguridad continúan vigentes para todas las escuelas.

Comuníquese continuamente con la escuela de su hijo y la enfermera de la escuela para cada tipo de cuarentena (a continuación).

- **Cuarentena de viajes-** actualmente, tanto los viajes nacionales como los internacionales se ven afectados. Puede haber diferencias entre estar vacunado y no vacunado, pero se recomendará algún tipo de cuarentena.
- **Síntomas-** si su hijo está enfermo o experimenta síntomas, manténgalo en casa hasta que no tenga síntomas. Si su hijo se enferma durante el día escolar, deberá recogerlo de la escuela.
- **Casos positivos en el hogar-** si alguien en su hogar es positivo para Covid, todos los niños del hogar deben permanecer en cuarentena en casa.
- **Casos positivos de estudiantes-** notifique a la escuela de inmediato y ponga al estudiante en cuarentena durante el número de días recomendado.
- **Contacto cercano-** cuando los estudiantes se consideran un contacto cercano con una persona positiva en la escuela, es posible que el estudiante deba ponerse en cuarentena.

Número de días de cuarentena

- May be 10, 14, or up to 24 days dependent upon the type of quarantine (above).



Long Branch Public Schools

"Together We Can, Juntos Nós Podemos, Juntos Podemos"

2021-2022 Procedimento COVID

- O estado de Nova Jersey continua apresentando alto risco de transmissão de Covid. Isso significa que as práticas de quarentena para viagens, doenças e na escola ainda estão em vigor.
- Os procedimentos de saúde e segurança ainda estão em vigor para todas as escolas.

Por favor, comunique-se continuamente com a escola do seu filho e a enfermeira da escola para cada tipo de quarentena possível.

- **Quarentena de viagens-** atualmente, as viagens domésticas e internacionais são afetadas. Pode haver diferenças entre ser vacinado e não vacinado, mas algum tipo de quarentena será recomendado.
- **Sintomas-** se seu filho estiver doente ou apresentando sintomas, mantenha-o em casa até que ele esteja livre dos sintomas. Se seu filho adoecer durante o dia escolar, você precisará buscá-lo na escola.
- **Casos domésticos positivos-** se alguém em sua casa for positivo para Covid, todas as crianças da casa deverão permanecer em quarentena em casa.
- **Casos positivos de alunos-** notifique a escola imediatamente e coloque o aluno em quarentena pelo número de dias recomendado.
- **Contato próximo-** quando os alunos são considerados um contato próximo com um indivíduo positivo enquanto estão na escola, o aluno pode precisar entrar em quarentena.

Número de dias de quarentena

- Pode ser de 10, 14 ou até 24 dias, dependendo do tipo de quarentena (acima).